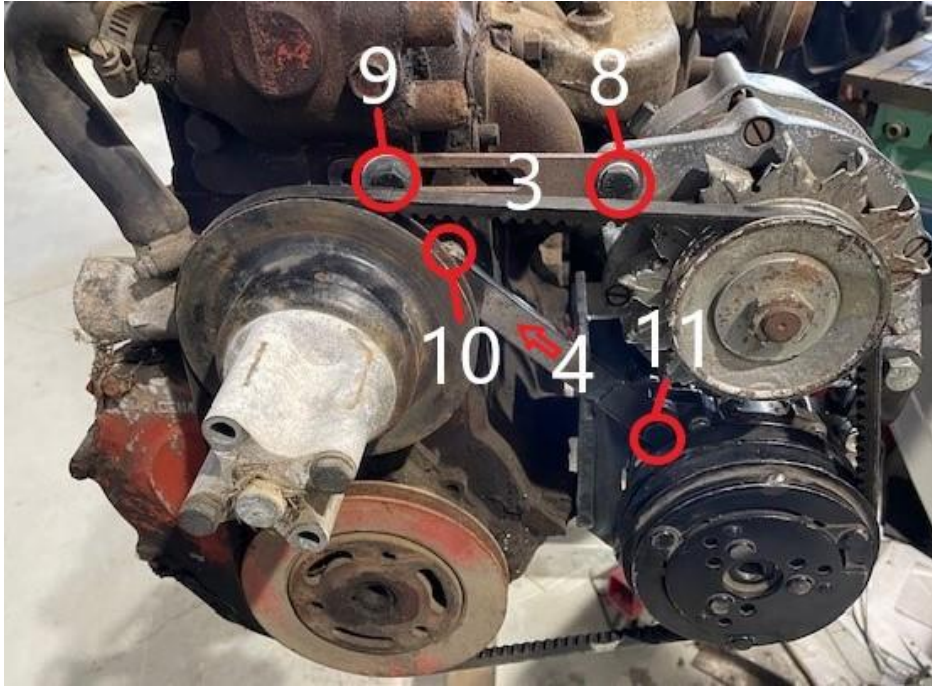
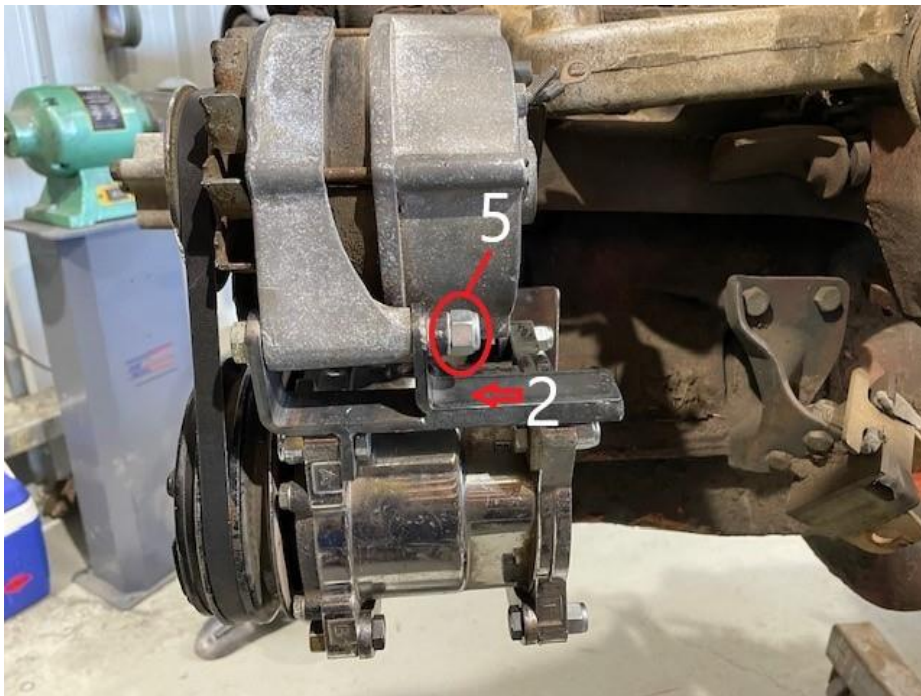


Holden 6 Cylinder Compressor Mount

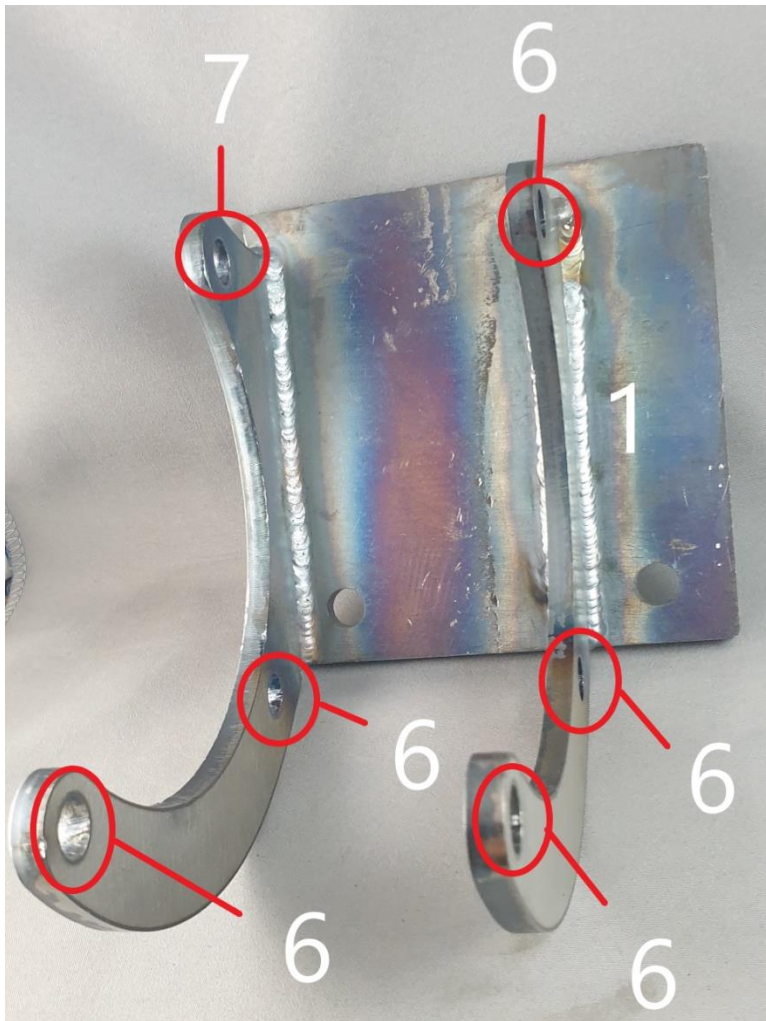
Adjustor And Stay



Alternator Mount



Main Bracket



1. Main Bracket
2. Alternator Bracket
3. Adjuster
4. Stay
5. $7/16'' \times 3 \frac{1}{4}'' \times 1''$
6. $3/8'' \times 1 \frac{1}{2}''$
7. $3/8'' \times 1 \frac{3}{4}'' \times 1$
8. $3/8'' \times 1''$
9. $3/8'' \times 1 \frac{1}{4}''$ (Washer Each Side Of Bolt)
10. $5/16'' \times 1 \frac{1}{4}''$
11. $2 \times 3/8''$ Washer Spacers

